

Bountiful Garden

Featuring English Garden by Snow Leopard

Bringing a lovely English garden into your home to enjoy is easier than you think. The glorious prints in this stunning collection of vibrant florals, fruits, and vegetables are appropriately framed by a leafy trellis and can be enjoyed year-round in this stylish quilt.

Collection: English Garden by Snow Leopard

Technique: Template Piecing, Quilting

Skill Level: Intermediate

Crafting Time: Weekend*

Finished Size: Finished Project Size:
56" x 69" (142.24cm x 175.26cm)
Finished Diamond Size:
7" x 10" (17.78cm x 25.40cm)

*Crafting time based on Intermediate skill level



COATS

Project designed by Susan Guzman, SuzGuz Designs

Tech edited by Alison Schmidt

Fabric Requirements

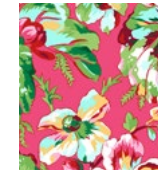
DESIGN	COLOR	ARTICLE CODE	YARDAGE
(A) Vegetable Garden	Spring	PWSL052.SPRIN	5/8 yard (57.15cm)
(B) Garden Peonies	Spring	PWSL053.SPRIN	3/4 yard (68.58cm)
(C) Begonia	Cherry	PWSL054.CHERR	3/4 yard (68.58cm)
(D) Pelargoniums	Spring	PWSL055.SPRIN	3/4 yard (68.58cm)
(E) Strawberry Fields	Cream	PWSL056.CREAM	3/4 yard (68.58cm)
(F) Rose Bower	Spring	PWSL057.SPRIN	3/4 yard (68.58cm)
(G) Cherry Tomatoes	Green	PWSL058.GREEN	5/8 yard (57.15cm)
(H) Cherry Tomatoes	Harvest	PWSL058.HARVE	2/3 yard (60.96cm)
(I) Cherry Tomatoes	Spring	PWSL058.SPRIN	5/8 yard (57.15cm)
(J) Pelargonium Leaves	Green	PWSL059.GREEN	1 3/4 yards (1.60m)



(A)



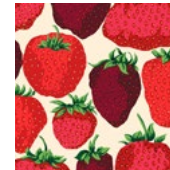
(B)



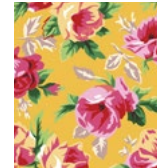
(C)



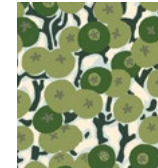
(D)



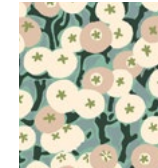
(E)



(F)



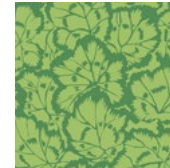
(G)



(H)



(I)



(J)

Backing (Purchased Separately)

44" (111.76cm)

Garden Peonies Spring PWSL053.SPRIN 4 3/8 yards (4.00m)

OR

108" (274.32cm)

2 1/4 yards (2.06m)



Backing
44"
(111.76cm)

Additional Requirements

- Coats Dual Duty XP® All-purpose thread in coordinating colors
- Sewing machine
- Rotary cutter/mat/ruler
- Template plastic
- Sharp pencil, pen, or thin-line marker
- Awl or thick needle
- Basic sewing and pressing supplies
- 64" x 77" (162.56cm x 195.58cm) quilt batting

Preparation

Trace template pieces onto template plastic and trim. Label each template piece with match points, grain lines, and template piece numbers. Use an awl or thick needle to pierce the plastic template pieces through the center of each match point to allow for marking match points onto the wrong side of each fabric piece. Align match points when sewing the fabric shapes together.

Cutting

WOF = Width of Fabric

r = reverse template before tracing it onto the fabric (refer to **Quilt Assembly** for orientation). You have enough fabric to cut all pieces for this quilt. Trace all templates onto fabric before cutting.

Fabric A, cut:

(8) Piece 5.

Fabric B, cut:

(11) Piece 5.

Fabric C, cut:

(10) Piece 5.

Fabric D, cut:

(13) Piece 5.

Fabric E, cut:

(11) Piece 5.

Fabric F, cut:

(11) Piece 5.

Fabric G, cut:

(7) 2½" x WOF (6.35cm x WOF) strips. Set aside for binding.

Fabric H, cut:

Refer to **Fig. 1** for cutting pieces.

(5) Piece 4.

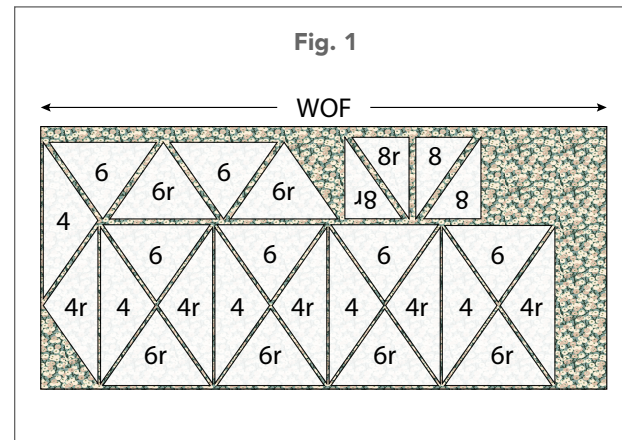
(5) Piece 4r.

(6) Piece 6.

(6) Piece 6r.

(2) Piece 8.

(2) Piece 8r.



Fabric I, cut:

(8) Piece 5.

Fabric J, cut:

(12) Piece 1.

(84) Piece 2.

(84) Piece 2r.

(14) Piece 3.

(71) Piece 7.

Sewing Instructions

All seam allowances are ¼" (0.64cm). Sew fabrics with right sides together.

Note: Refer to the **Quilt Layout** for the following steps. Align match points when sewing the fabric pieces together.

1. Referring to the upper left corner of the **Quilt Layout**, arrange and sew together each of the 13 diagonal sashing rows using **Fabric J** Pieces 1, 2, 3, and 7. Press seam allowances towards the Piece 2's. Set the rows aside in the order you made them.
2. In the same manner, arrange and sew together each of the 12 diagonal large-diamond rows using Piece 5's (**Fabrics A-F and I**), Pieces 4, 4r, 6, and 6r (all **Fabric H**), and Piece 2r's, as shown. Press seam allowances towards the Piece 2r's.

Quilt Top Assembly

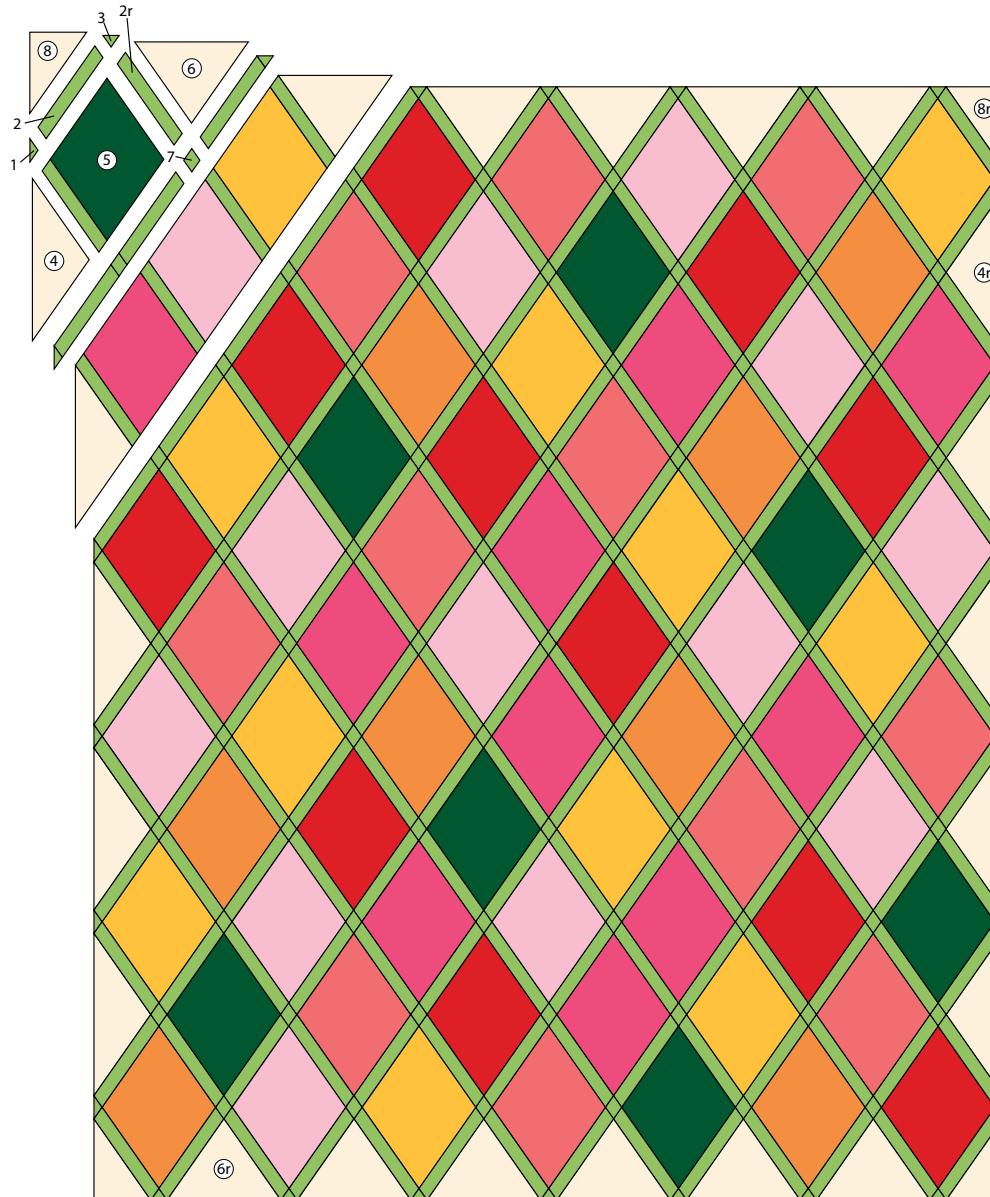
3. Aligning match points, pin and sew sashing row 1 to large-diamond row 1; press toward sashing row. Continue pinning and sewing alternating sashing and large-diamond rows together; press toward sashing rows. Sew **Fabric H**, Piece 8's and 8r's, to the corners of the quilt top and press toward sashing strips to finish.

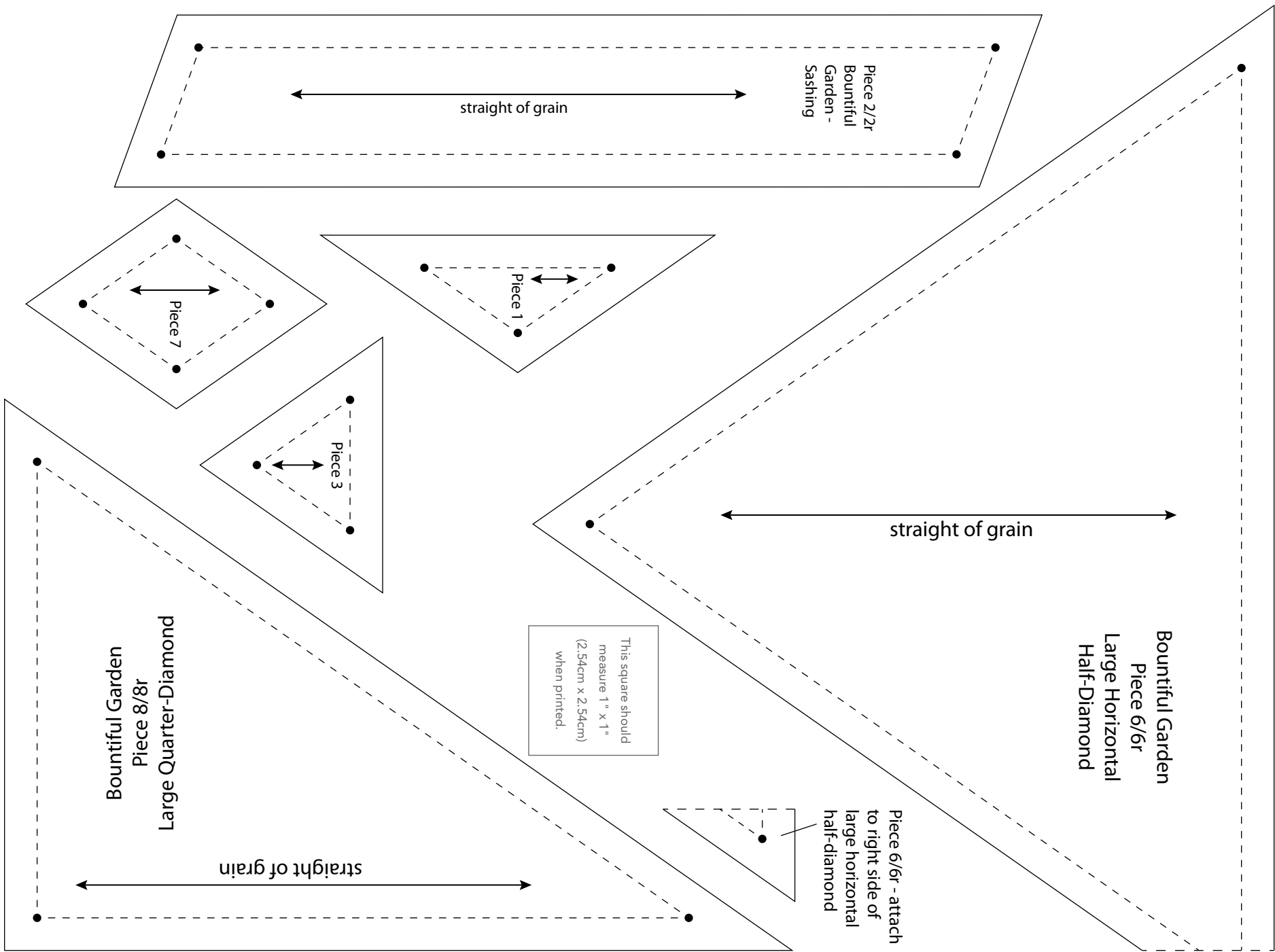


Finishing

4. Layer the backing, batting, and quilt top together to make a quilt sandwich; baste the layers together and quilt as desired. Trim the batting and backing even with the quilt top.
5. Make **Fabric G** binding. Fold the binding in half, matching wrong sides, and press the length.
6. Sew the binding to the quilt top and miter the corners. Turn the binding to the back of the quilt and hand-stitch in place to finish your quilt.

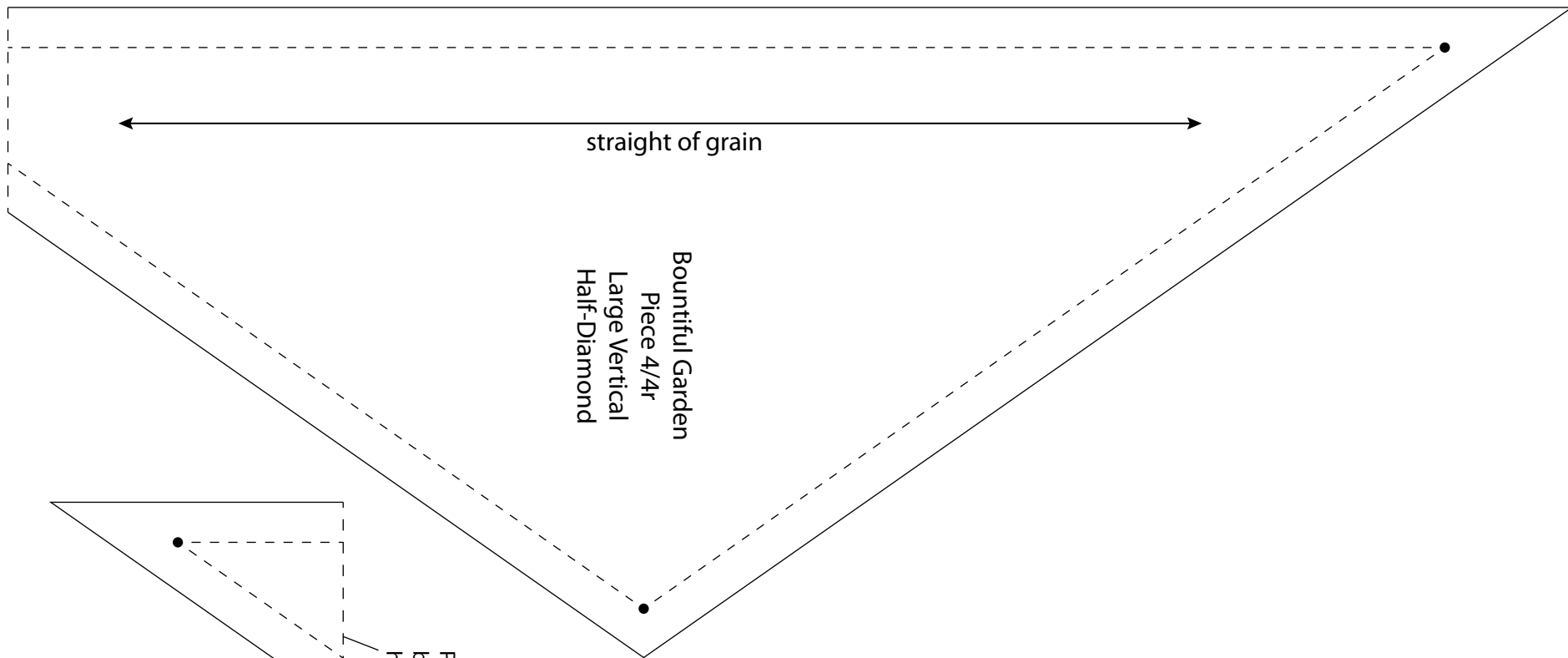
Quilt Layout





*** Measure templates before cutting to confirm printing at 100%***





straight of grain

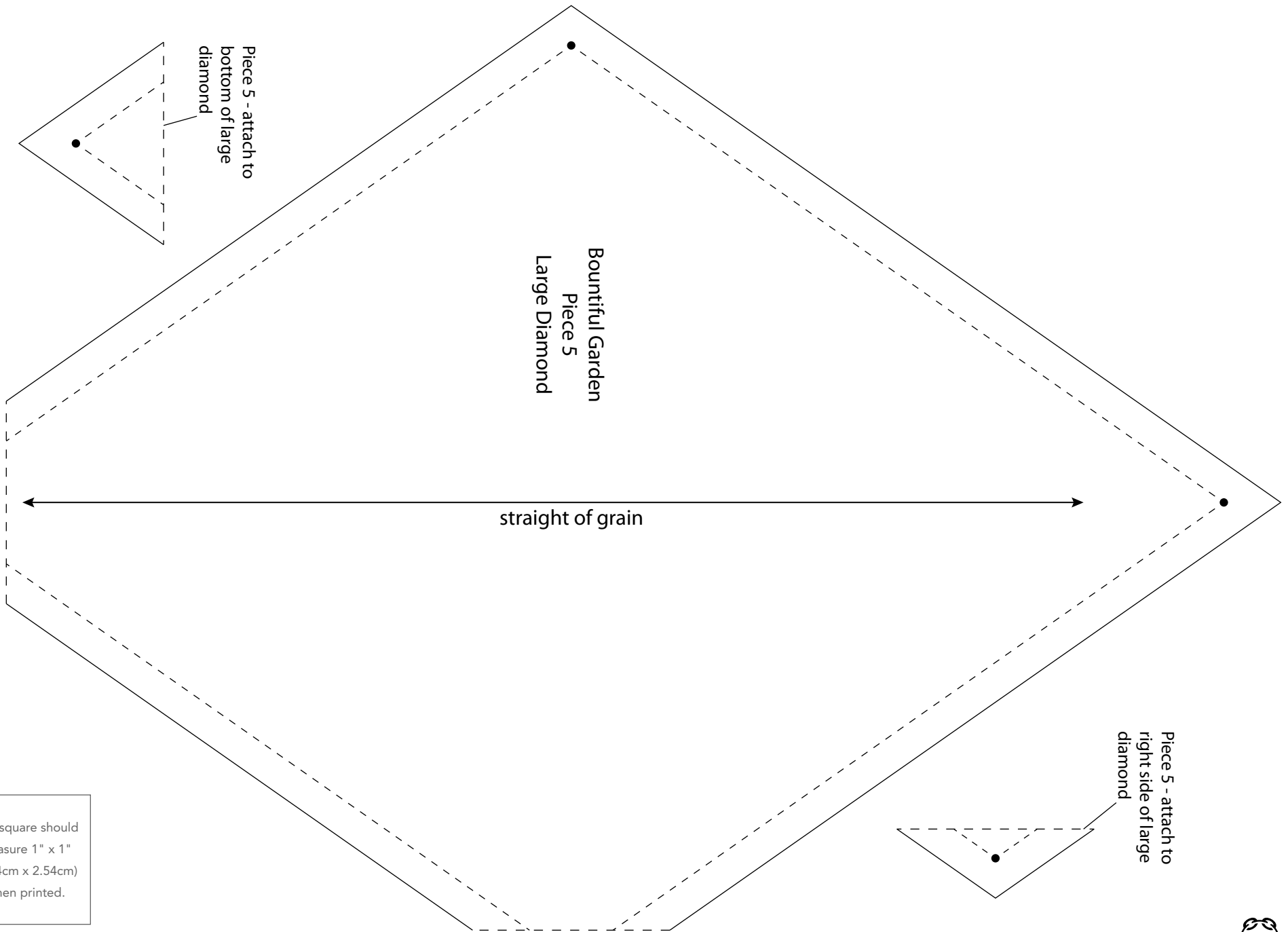
Bountiful Garden
Piece 4/4r
Large Vertical
Half-Diamond

Piece 4/4r - attach to
bottom of large vertical
half-diamond

This square should
measure 1" x 1"
(2.54cm x 2.54cm)
when printed.

***** Measure templates before cutting to confirm printing at 100%*****





This square should measure 1" x 1" (2.54cm x 2.54cm) when printed.

***** Measure templates before cutting to confirm printing at 100%*****

