



FREE patterns
included
Inkl. GRATIS-
Anleitungen

The very first fabric collection
designed by ARNE & CARLOS

Die erste Stoffkollektion
designed by ARNE & CARLOS

Article-No. 0022248-05S19

ARNE & CARLOS



4 053859 311038

CONTENTS/INHALT

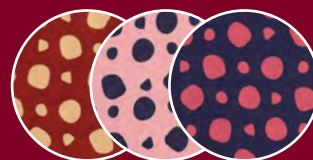
Nordic Garden Dream Collection SOLHATT

S./P. 4



Nordic Garden Dream Collection REVEBJELLE

S./P. 5



Nordic Garden Dream Collection STAUDER

S./P. 7



Nordic Garden Dream Collection SVERDLILJE

S./P. 8



Nordic Garden Dream Collection NYPEROSER

S./P. 9



Nordic Garden Dream Collection BLOMSTERENG

S./P. 9



MEZ Needlecraft GmbH
Hauptstraße 78, 79336 Herbolzheim, Germany
www.mezcrafts.com

www.facebook.com/MEZfabrics
www.instagram.com/mezfabrics
www.handmadedekultur.de/unternehmen/mez-handarbeiten

Article-N0. 0022248-0SS19
Magazine Vol. 2

Photos/Fotos:

Beach Days & Tutti Frutti Collection – Britt Schilling Fotografie
Nordic Garden Dream Collection – Ragnar Hartvig

Layout/Layout: j*DSiGN – Jenny Dressel

Source of supply/Bezugsquellen für Schnittmuster:

www.burdastyle.de
www.kid5.de
www.patterncompany.de
www.firlefanzen-schnittmuster.de
www.handmadedekultur.de

Source of supply/Bezugsquellen Häkel- & Strickanleitungen:

www.schachenmayr.com
www.anchorcrafts.com

EDITORIAL BY ARNE & CARLOS

Dear sewing lovers and fabric addicts,

We are delighted to introduce our very first collection of fabrics. Inspired by some of our favourite flowers and colours from our own garden, we have created a series of whimsical florals and graphic prints which can be easily mixed and matched: Yellow and red roses, Iris, electric blue Meconopsis, purple Delphiniums, shocking pink Daisies and Fireweed are plants that are essential in any Nordic garden and which now feature in this collection.

The main fabric in this series is our very own Nordic dream, a collage of flowers and transparent butterflies which can be filled with embroidery if you wish.

We live and work in a peaceful place, on top of a mountain in Norway. The days are long and bright during our Scandinavian summer and the altitude of our Nordic garden allows for a very special light to enter into our space. This special light intensifies all the colours of our flowers and trees and makes this a magical place.

Memories of our latest summer and the anticipation of next year's floral splendour has inspired this collection.

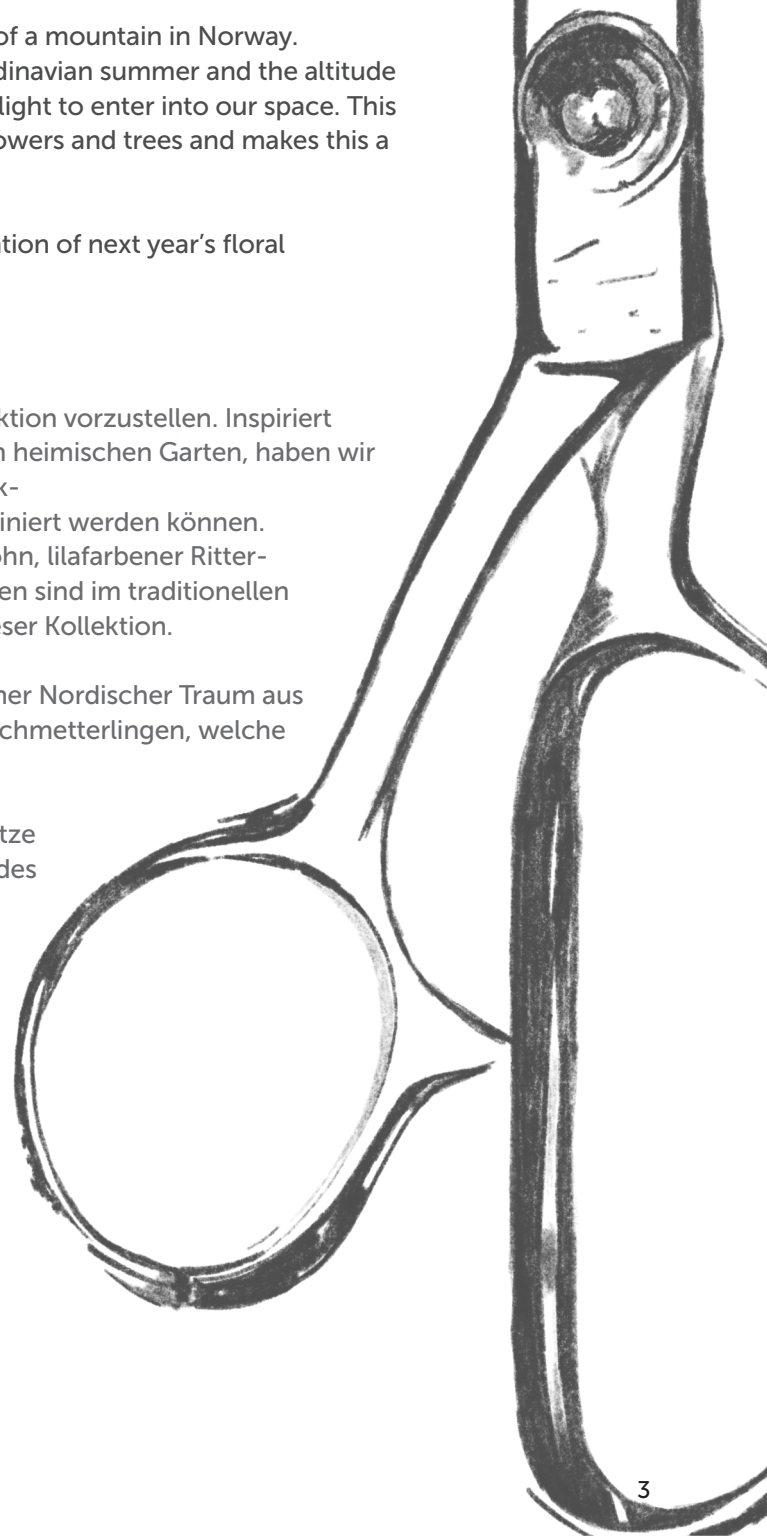
Liebe Nähbegeisterte und Stoffverliebte ,

wir freuen uns sehr Dir unsere allererste Stoffkollektion vorzustellen. Inspiriert durch unsere Lieblingsblumen und Farben aus dem heimischen Garten, haben wir eine Serie aus stimmungsvollen Blumen- und Grafik-prints kreiert, welche wunderbar miteinander kombiniert werden können. Gelbe und rote Rosen, Iris, blaubühender Scheinmohn, lilafarbener Rittersporn, knallpinke Gänseblümchen und Weidenröschen sind im traditionellen norwegischen Garten ein Muss und somit auch in dieser Kollektion.

Das Herzstück der Kollektion ist unser ganz persönlicher Nordischer Traum aus Stoff: eine Mischung aus Blumen und transparenten Schmetterlingen, welche auch mit Stickereien befüllt werden können.

Da wir an einem idyllischen Fleckchen auf einer Bergspitze Norwegens leben und arbeiten, sind die Tage während des skandinavischen Sommers besonders lang und sonnig. Bedingt durch die Höhenlage leuchten die Farben unserer Blumen und Bäume sehr intensiv und hüllen alles in ein magisches Licht. Erinnerungen aus unserem letzten Sommer und die Vorfreude auf die kommende Blütenpracht haben uns zu dieser Kollektion inspiriert.

Arne & Carlos

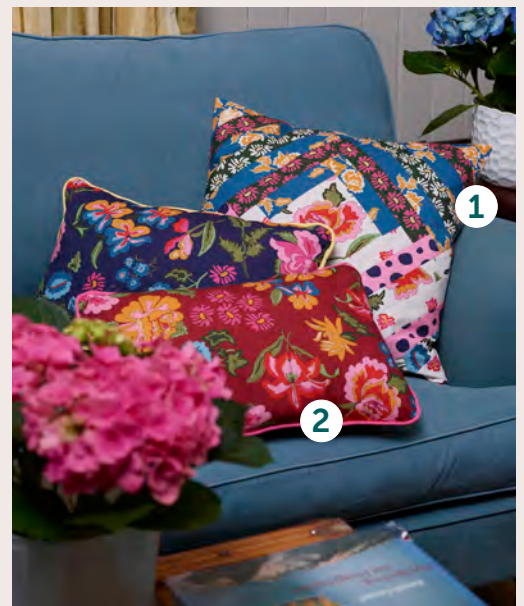


Nordic Garden Dream Collection

SOLHATT

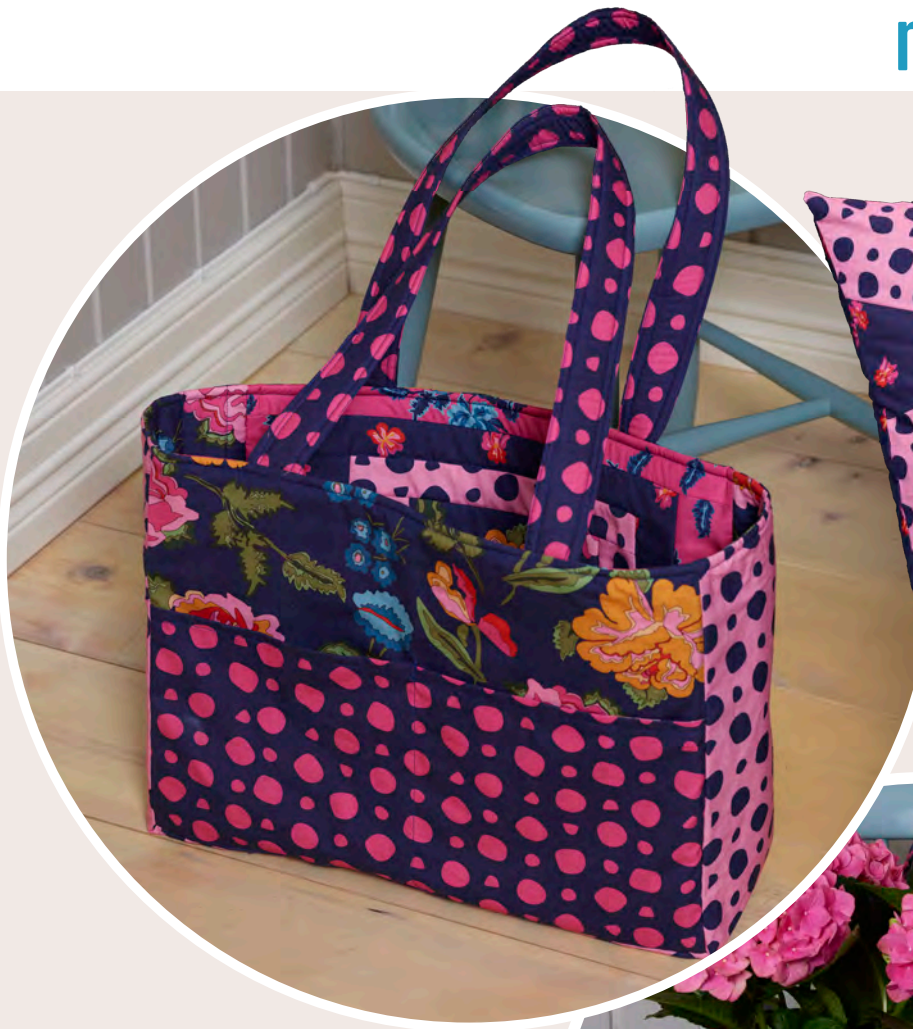
A treasure trove of colours and striking floral patterns. That's the premise of the first fabric collection from the Norwegian designer duo ARNE NERJORDET and CARLOS ZACHRISSON.

Eine Fülle an Farben und auffälligen Blumenmustern: Das zeichnet die erste Stoffkollektion des norwegischen Designerduos ARNE NERJORDET und CARLOS ZACHRISSON aus.

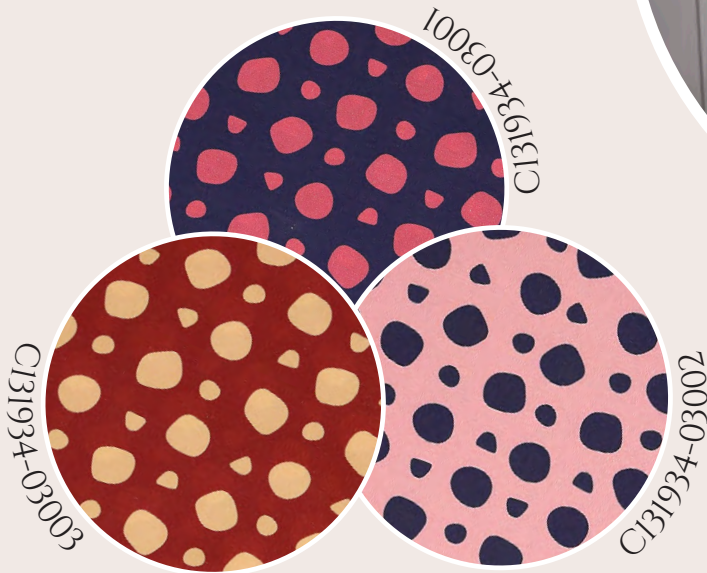


Pattern overview/Modellübersicht

- 1) Cushion/Kissen „Log Cabin“, Pattern/Modell: MEZfabrics MZF0001-00021
- 2) Cushion with Piping /Kissen mit Paspel, Pattern/Modell: S. 22/P. 22
- 3) Cushion/Kissen „Star“, Pattern/Modell: MEZfabrics MZF0001-00022



Nordic Garden
Dream Collection
REVEBJELLE



Reversible Bag
Wendetasche "Nordic"
Pattern/Modell: MZF0001-00023

A bag of many colours!
Eine Tasche mit vielen Facetten!

FABRIC WIDTH
STOFFBREITE
144 - 146 CM

MATERIAL/COMPOSITION
100% BAUMWOLLE/COTTON

OEKO-TEX
STANDARD 100

FREE
pattern

GRATIS-
Anleitung



Cushion with Piping – Instructions (approx. 45 x 29 cm)

YOU WILL NEED:

Fabrics from MEZfabrics Collection "Nordic Garden Dream" by ARNE & CARLOS, 100% cotton, approx. 146 cm wide

- Fabric A: C131933-03001 (35 cm x 50 cm)

- Fabric B: C131938-03001 (35 cm x 50 cm)

MEZ Duet sewing thread in a matching colour

150 cm ready-made piping, 4 mm Ø, (e.g. from Prym)

Ca 200g polyester deco-wadding from Freudenberg for stuffing

CUTTING INSTRUCTIONS:

For the cushion cover: Fabric A and fabric B:

1 rectangle 46.5 x 31.5 cm in each of the fabrics

SEWING INSTRUCTIONS:

Note: All measurements include a seam allowance of 0.75 cm unless otherwise indicated.

1. First of all round the corners of the two cushion cover rectangles, e.g. using a glass.
2. Pin or baste the piping around the sides of one rectangle, laying the beginning of the piping at an angle off the edge of the fabric. Stitch all the way around close to the cord, using the zipper foot on the sewing machine. At the end angle the cord off the edge of the rectangle, overlapping the beginning edge, and overstitch. Trim away any excess piping.
3. Place the second rectangle over the first, right sides together and stitch in place, again using the zipper foot, and leaving an opening of ca 10 cm on the side opposite the beginning/End of the piping for turning and stuffing.
4. Turn the cushion cover right sides out, fill with stuffing and close the opening by hand.

Anleitung für ein Kissen mit Paspel (ca. 45 x 29 cm)

DU BRAUCHST:

Stoffe von MEZ Fabrics Collection "Nordic Garden Dream" designed by ARNE & CARLOS, 100% Baumwolle, ca. 146 cm breit

- Stoff A: C131933-03001 35 cm x 50 cm

- Stoff B: C131938-03001 35 cm x 50 cm

MEZ Duet Nähgarn in passender Farbe

150 cm vorgefertigte Paspel, 4 mm Ø, (z.B. von Prym)

Ca. 200g Dekowatte von Freudenberg

ZUSCHNEIDEN:

Für den Kissenbezug: Stoff A und B

Je ein Rechteck 46,5 x 31,5 cm

NÄHANLEITUNG:

Hinweis: Falls nicht anders angegeben sind alle Maße inkl. 0,75 cm Nahtzugabe.

1. Zuerst die Ecken der beiden Rechtecke mit Hilfe z.B. eines Trinkglases abrunden.
2. Paspel rechts auf rechts rund herum an ein Kissenrechteck feststecken oder -heften, dabei am Anfang die Paspel leicht abgewinkelt etwas über die Stoffkante ragen lassen. Mit dem Reißverschlussfüßchen der Nähmaschine festnähen, am Ende die Paspel quer über den Anfang nach außen auslaufen lassen und übernähen. Überschüssige Paspel abschneiden.
3. Zweites Kissenrechteck rechts auf rechts darauf legen und wieder mit dem Reißverschlussfüßchen der Nähmaschine festnähen, an der Längsseite gegenüber des Paspelanfangs ca 10 cm zum späteren Wenden und Füllen offen lassen.
4. Kissenhülle wenden, mit Füllwatte füllen und die Wendeöffnung von Hand schließen.



Nordic Garden Dream Collection STAUDER

The two designers were inspired by their own garden, which have now been turned into cosy soft furnishings, fashionable accessories and elegant items of clothing.

Inspiriert wurden die beiden kreativen Köpfe von ihrem eigenen Garten, welcher nun in gemütlichen Heimtextilien, modischen Accessoires und eleganten Bekleidungsstücken für Dich verarbeitet wurde.



STAUDER is available in cotton and jersey.

STAUDER ist in Baumwolle und Jersey erhältlich.



Nordic Garden Dream Collection SVERDLILJE

Bright, deep colours play an important roll in the darkest regions of Northern Europe! The Scandinavians defy the darkness with a fresh and cheerful lifestyle – why not try it out too and treat yourself to an extra helping of happiness?

Im lichtarmen Nordeuropa spielen kräftige und tiefe Farbtöne eine wichtige Rolle! Die Skandinavier trotzen dieser Gegebenheit mit einem frisch-fröhlichen Lifestyle, welcher auch bei Dir für eine ordentliche Portion Glück sorgt.



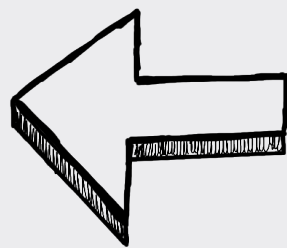
SVERDLILJE is available
in cotton and jersey.

SVERDLILJE ist in Baumwolle
und Jersey erhältlich.

C131937-03004 & J131940-03004

C131937-03003 & J131940-03003

C131937-03002 & J131940-03002



This pussy-bow blouse with 4-button cuffs and detachable bow looks very feminine and would work well with a pair of skinny trousers or a pencil skirt.

Die Schluppenbluse mit 4-Knopf-Manschetten und abnehmbarer Schleife wirkt sehr feminin und passt gut zu einer schmalen Hose oder einem Bleistiftrock.



Nordic Garden Dream Collection
NYPEROSER BLOMSTERENG



FABRIC WIDTH
 STOFFBREITE
 144 - 146 CM

MATERIAL/COMPOSITION
 100% BAUMWOLLE/COTTON

OEKO-TEX
 STANDARD 100

FREE
pattern
GRATIS-
Anleitung



Nordic STAR QUILT

A quilt of many stars designed by Janet Goddard
(www.patchworkpatterns.co.uk) using fabrics from the
Nordic Garden Dream Collection designed by
ARNE & CARLOS for MEZfabrics.

Finished size 46 x 58in (116.8 x 147.3cm)

Preparation

The quilt is made up of twelve star blocks. Six blocks are stitched in one colourway and six in a second colourway. The quilt is finished with a narrow inner border and a wider outer border.

Materials

Requirements based on fabrics with a useable width of 55in (140cm)

- › 20in (½ m) revebjelle white (pink/blue dot) for block 1 background
- › 20in (½ m) solhatt blue (mid blue daisy) for block 1 inner star and inner border
- › 25in (63.5cm) sverdlilje blue (dark blue iris) for block 1 outer star
- › 20in (½ m) sverdlilje white (white iris) for block 2 background
- › 15in (38.1cm) nyperoser white (mid blue roses) for block 2 inner star
- › 20in (1/2 m) nyperoser blue (pink roses) for block 2 outer star
- › 30in (¾ m) stauder blue (garden dream) for outer border and binding
- › 50 x 62in (127 x 157.5cm) backing

Wadding (Batting)/Haberdashery

- › 50 x 62in (127 x 157.5cm) wadding
- › Neutral thread for piecing
- › Grey thread for quilting

Cutting

All cutting instructions include a ¼ in (0.65cm) seam allowance.

Pink/blue dot for block 1 background

- › Twenty four 2 ½ in (6.3cm) squares
- › Twenty four 2 7/8 in (7.3cm) squares and cross cut each of these on the diagonal once
- › Six 5 ¼ in (13.3cm) squares and cross cut each of these on the diagonal twice

Mid blue daisy for block 1 inner star and inner border

- › Six 4 ½ in (11.5cm) squares
- › Twenty four 2 7/8 in (7.3cm) squares and cross cut each of these on the diagonal once
- › Four 1 ½ in (3.8cm) WOF strips

Dark blue iris for block 1 outer star

- › Twenty four 2 ½ in (6.3cm) squares
- › Forty eight 2 7/8 in (7.3cm) squares and cross cut each of these on the diagonal once
- › Six 5 ¼ in (13.3cm) squares and cross cut each of these on the diagonal twice

White iris for block 2 background

- › Twenty four 2 ½ in (6.3cm) squares
- › Twenty four 2 7/8 in (7.3cm) squares and cross cut each of these on the diagonal once
- › Six 5 ¼ in (13.3cm) squares and cross cut each of these on the diagonal twice

Mid blue roses for block 2 inner star

- › Six 4 ½ in (11.5cm) squares
- › Twenty four 2 7/8 in (7.3cm) squares and cross cut each of these on the diagonal once

Pink roses for block 2 outer star

- › Twenty four 2 ½ in (6.3cm) squares
- › Forty eight 2 7/8 in (7.3cm) squares and cross cut each of these on the diagonal once
- › Six 5 ¼ in (13.3cm) squares and cross cut each of these on the diagonal twice

Garden dream for outer border and binding

- › Four 4in (10cm) WOF strips
- › Four 2in (5cm) WOF strips

To stitch the patchwork

To stitch one block

1. Take four large dark blue iris triangles and stitch a small mid blue daisy triangle to each diagonal. Press seams away from the large triangle and trim points. **photo1**
2. Take four large pink/blue dot triangles and stitch a small dark blue iris triangle to each diagonal. Press seams away from the large triangle and trim points. **photo2**
3. Take eight small pink/blue dot triangles and stitch each to a small dark blue iris triangle. Press seams towards the dark fabric. Trim points. **photo3**
4. Take four dark blue iris 2 ½ in squares and stitch a triangle unit completed in step 3 to one side. The dark blue iris triangle should be adjacent to the square. Press seams towards the square.
5. Take four pink/blue dot 2 ½ in squares and stitch a triangle unit completed in step 3 to one side. The dark blue iris triangle should be adjacent to the square. Press seam towards the square. **photo4**

6. Stitch the units made in steps 4 and 5 together so that the squares are diagonally opposite. Press seams towards the dark blue square. **photo5**
7. Stitch the units made in steps 1 and 2 together in pairs so that the dark blue iris triangles match. Press seams away from the mid blue daisy triangles. **photo6**
8. Lay out the units for the star block using the photo for guidance into three rows of three units. Stitch the units in each row together. **photo7** Press seams in each row in alternate directions. Stitch the rows together matching seams. Press seams downwards. **photo8**
9. Continue in this way until you have stitched six blocks.

To stitch one block 2

10. Follow the instructions as for block 1 but substitute the fabrics with the white iris, mid blue roses and pink roses fabrics.
11. Stitch this block in exactly the same way as for the first block however in steps eight and nine press seams in alternate directions.
12. Continue in this way until you have stitched six blocks

Assembly

13. Lay out the blocks into four rows of three blocks, alternating the blocks.
14. Stitch the horizontal rows together, pressing the seams of each row in opposite directions
15. Stitch the rows together and press all seams downwards.
16. To complete the inner border stitch the 1 ½ in mid blue daisy strips together and then re-cut the strips into two 48 ½ in strips and two 38 ½ in strips.
17. Stitch a 48 ½ in strip to each side of the quilt. Press seams away from the centre.
18. Stitch a 38 ½ in strip to the top and bottom of the quilt. Press seams away from the centre.
19. To complete the outer border stitch the 4 in garden dream strips together and then re-cut the strips into two 50 ½ in strips and two 45 ½ in strips.
20. Stitch a 50 ½ in strip to each side of the quilt. Press seams away from the centre.
21. Stitch a 45 ½ in strip to the top and bottom of the quilt. Press seams away from the centre.

Completion

22. Make a quilt sandwich with the quilt top, wadding and backing.
23. Pin or baste the layers together.
24. Machine quilt lines on the diagonal through the blocks stitching lines 3in apart.
25. Stitch the 2in garden dream strips together. Double bind edges with 2in binding strips.
26. Add a label.

Courtyard Garden

A quilt of many stars designed by Janet Goddard (www.patchworkpatterns.co.uk) using fabrics from the Nordic Garden Dream collection designed by Arne and Carlos for MEZfabrics.

Step by Step Photos:



FREE
pattern

GRATIS-
Anleitung



Courtyard GARDEN QUILT

A quilt of floral squares, triangles and rectangles designed by Janet Goddard (www.patchworkpatterns.co.uk) using fabrics from the *Nordic Garden Dream Collection* designed by ARNE & CARLOS for MEZfabrics.

Finished size 44 x 44in (112 x 112cm)

Preparation

The quilt is made up of nine repeated blocks and is finished with a wide border.

Materials

Requirements based on fabrics with a useable width of 55in (140cm)

- › 15in (38.1cm) stauder white (white floral) for triangles in block
- › 15in (38.1cm) stauder red (red floral) for triangles in block
- › 15in (38.1cm) solhatt white (daisy) for rectangles in block
- › 10in (25cm) blomstereng red (rhombus) for squares in block
- › 10in (25cm) sverdlije red (iris) for squares in block
- › 30in (75cm) nyperoser red (roses) for outer border and binding
- › 48 x 48in (121.9 x 121.9cm) backing

Wadding (Batting)/Haberdasher

- › 48 x 48in (121.9 x 121.9cm) wadding
- › Neutral thread for piecing
- › Green thread for quilting

Cutting

All cutting instructions include a ¼ in (0.65cm) seam allowance.

White floral

- › Nine 6 7/8 in (17.5cm) squares and cross cut each of these on the diagonal once

Red floral

- › Nine 6 7/8 in (17.5cm) squares and cross cut each of these on the diagonal once

Green daisy

- › Thirty six 2 5/8 x 4 ¾ in (6.7 x 12.07cm) rectangles

Rhombus

- › Thirty six 2 5/8 in (6.7cm) squares

Iris

- › Thirty six 2 5/8 in (6.7cm) squares

Roses for outer border and binding

- › Four 4 ½ in (11.5cm) WOF strips
- › Four 2in (5cm) WOF strips

To stitch the patchwork

To stitch one block

1. Take two rhombus squares and two iris squares and stitch into pairs. Press seams towards the iris squares. Stitch the pairs together so that the rhombus squares are diagonally opposite each other. Press seam downwards. **photo1**
2. Take two daisy rectangles and stitch one to each side of the unit completed in step one. Press seams away from the centre. **photo2**
3. Take two daisy rectangles, two rhombus squares and two iris squares. Stitch a rhombus square to one end of each rectangle and an iris square to the opposite end. Press seams towards the rectangle. **photo3**
4. Stitch the units completed in step three to the top and bottom of the unit completed in step two ensuring that the rhombus and iris fabrics follow a diagonal pattern. Press seams away from the centre. **photo4**
5. Take two red floral triangles and stitch one to each side of the unit completed in step four. Press seams away from the centre. **photo5**
6. Take two white floral triangles and stitch one to each side of the unit completed in step five. Press seams away from the centre. Trim points. **photo6**
7. Continue in this way until you have stitched nine blocks.

Assembly

8. Lay out the blocks into three rows of three blocks, ensuring that the blocks are orientated the same way each time.
9. Stitch the horizontal rows together, pressing the seams of each row in opposite directions
10. Stitch the rows together and press all seams downwards.
11. To complete the outer border stitch the 4 ½ in rose strips together and then re-cut the strips into two 36 ½ in strips and two 44 ½ in strips.

12. Stitch a 36 ½ in strip to the top and bottom of the quilt. Press seams away from the centre.
13. Stitch a 44 ½ in strip to each side of the quilt. Press seams away from the centre.

Completion

14. Make a quilt sandwich with the quilt top, wadding and backing.
15. Pin or baste the layers together.
16. Machine quilt lines wavy lines horizontally across the quilt at 2in intervals using the green thread.
17. Stitch the 2in rose strips together. Double bind edges with 2in binding strips.
18. Add a label

Courtyard Garden

A quilt of floral squares, triangles and rectangles designed by Janet Goddard (www.patchworkpatterns.co.uk) using fabrics from the Nordic Garden Dream collection designed by Arne and Carlos for MEZfabrics.

Step by Step Photos:



Nordic Garden Dream Collection

FABRICS OVERVIEW/STOFFÜBERSICHT

STAUDER



BLUE
C131933-03001



BLUE
J131939-03001



RED
C131933-03002



RED
J131939-03002

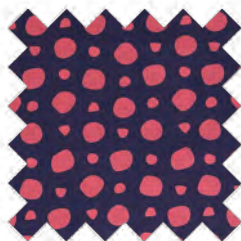


WHITE
C131933-03003



WHITE
J131939-03003

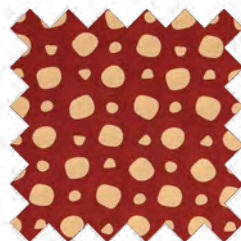
REVEBJELLE



BLUE
C131934-03001



WHITE
C131934-03002



RED
C131934-03003

SOLHATT



RED
C131935-03001



WHITE
C131935-03002



BLUE
C131935-03003

Material:
C = Cotton

100% Cotton/Baumwolle

144-146 cm

145 g/M²

NYPEROSER



BLUE
C131936-03001

WHITE
C131936-03002

RED
C131936-03003

Delivery as of
01.08.2019
Lieferbar ab
01.08.2019

BLOMSTERENG

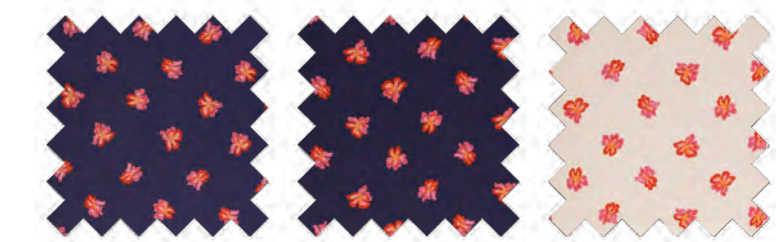


BLUE
C131938-03001

WHITE
C131938-03002

RED
C131938-03003

SVERDLILJE



BLUE
C131937-03002

BLUE
J131940-03002

WHITE
C131937-03003



WHITE
J131940-03003

RED
C131937-03004

RED
J131940-03004

